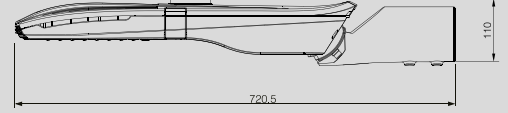
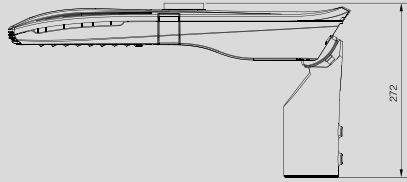
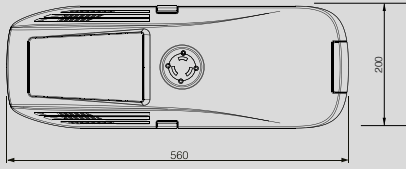


**ARIALED** MINI  

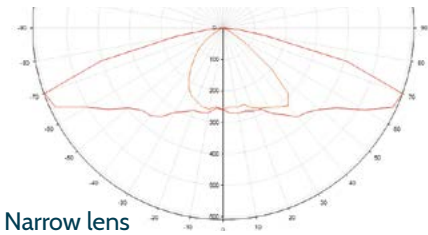



# Introducing Arialed Mini

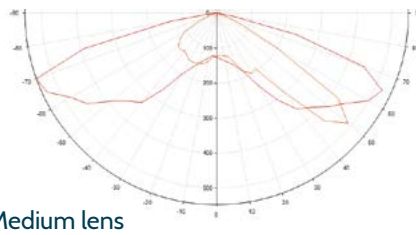
The ARIALED Mini, built on the success of its bigger brother the ARIALED, the Mini packs the same high performance plus new advanced features in an attractive, light weight and affordable package. The body & self contained LED module are crafted to maximise cooling efficiency and offers a virtually maintenance free life. Entry to the power compartment, replacement of the LED light engine and gear tray are possible tool free making the Arialed Mini environmentally friendly and future proof.



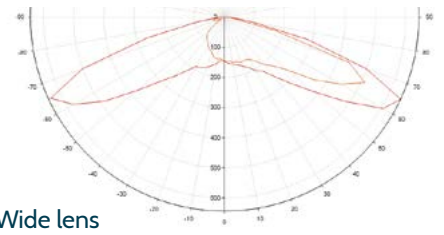
Measurement in millimetres.



Narrow lens

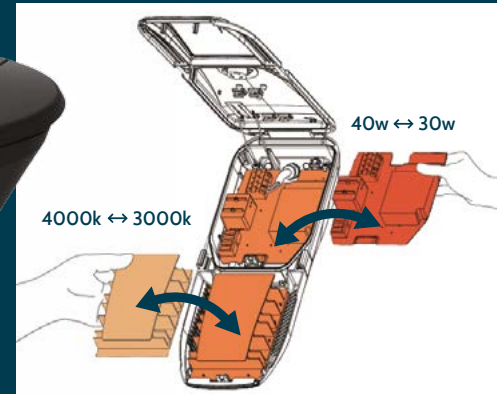
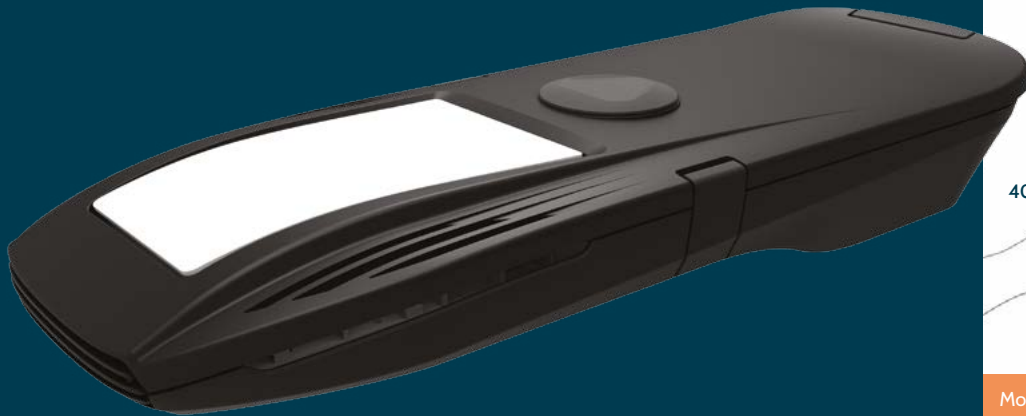


Medium lens



Wide lens

## Product Features



Modular design enables future lumen package upgrades along with smart city sensors



SmartCity Ready



Tool Free Access



CLO Available



IP66



Up to IK10



Modular



Lumen Boost  
Tune lumen output



Preset Dimming



Surge Protection – 10kV 5kA  
MLV (clamping voltage) 1.2kV



Tilt angle adjustment  
+10° to -10°



Lightweight  
LM6 aluminium

## Lantern Information

Weight	5.4 kg
Windage	0.035m <sup>2</sup>
RAL codes	Black: RAL 9017 Grey: RAL 7040 Green: RAL 6013
Mounting sizes	76, 60, 42, 34mm

## Lumen Boost

Tune your driver and lumen output to provide the specific light level required, reducing your lantern variations. Photometry is available in incremental lumen steps to simplify design process and maximise energy savings.

Lumen output range	RA/CRI index	CCT	LX value	Lumens per watt
1250 - 9200 lumens	>70 Standard >80 Available	3000k, 4000k, 5000k	L90 > 100,000 hours	Upto 130 lm/w

Visit: [www.orange\*\*tek\*\*.co.uk](http://www.orange<b>tek</b>.co.uk)  
to find out more or call our sales team  
**+44 (0)1283 347 792**

Photometry



Website



RoHS **WEEE**  
Compliant



All facts and figures correct at time of printing, subject to change.